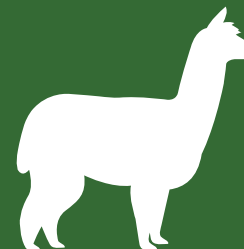


# Alpaca Gold



**Sustainable  
Gardening**



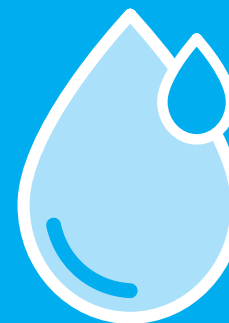
**Nutrient  
Rich**



**100%  
Natural**



**Water  
Retention**



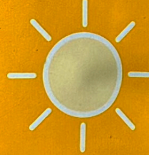



**NATURAL SOIL AMENDMENT**

Made in Canada

NATURAL SOIL AMENDMENT  
AMÉLIORANT NATUREL DU SOL

# Alpaca Gold

<p><b>Sustainable Gardening</b></p>  <p><b>Jardinage durable</b></p>	<p><b>Nutrient Rich</b></p>  <p><b>Riche en nutriments</b></p>	<p><b>100% Natural</b></p>  <p><b>100% naturels</b></p>	<p><b>Water Retention</b></p>  <p><b>Rétention d'eau</b></p>
---	---	--	--

Made in Canada | Fabriqué au Canada

# Regenerate the soil, rejuvenate the earth

**Alpaca Gold locks in nutrients, boosts soil biology, and transforms your soil into a healthy, resilient, high-performing garden medium.**

A carefully crafted blend of alpaca manure, waste fiber, waste hay (carbon) and biochar, Alpaca Gold is nutrient rich, feeding your plants with slow-release nitrogen while restoring soil health and improving moisture retention through sustainable, circular farming practices that are good for your garden and the planet.

# A better tomorrow

As a farmer, nursery, or passionate gardener, you know the vital importance of healthy, nutrient-rich soil to the success of your crops and plants. That's why I'm excited to introduce you to Alpaca Gold — a revolutionary soil amendment that harnesses the power of nature to transform your soil.

Small farms range in size with an average fleece weight of 3lbs–5lbs each. The Alpaca Fibre Shed offers a “New GenerationCo-operative” This provides an opportunity for participating farms to have access to mills and finished products. Waste fibre is a residual of this process and is used in our soil amendment.



**Frances Stewart**  
**Founder, Alpaca Gold**  
frances@alpacagold.ca  
416-873-7476





## Sustainable Gardening



**Alpaca Gold restores your soil health with a product produced with regenerative and eco-friendly principles from start to finish**

# Renewable, regenerative and responsible



**1**

## **Renewable Resource**

Made from alpaca manure, a byproduct of naturally grazing animals.

No synthetic fertilizers or chemical additives are used.

**2**

## **Supports Soil Health Long-Term**

Adds organic matter that improves soil structure, moisture retention, and microbial life.

Helps soils retain nutrients, reducing the need for repeated chemical fertilizers.

**3**

## **Low Environmental Impact**

Composting prior to blending reduces odors, pathogens, and weed seeds.

Reduces methane and other emissions compared with raw manure left to decay improperly.

**4**

## **Carbon Friendly**

When combined with biochar, Alpaca Gold can help sequester carbon in the soil.

Supports climate-friendly gardening practices.

**5**

## **Safe & Responsible**

No harmful runoff or pollution when applied as recommended.

Encourages organic, regenerative gardening practices.

**Nutrient  
Rich**



**Alpaca Gold's composition  
provides the nutrients plants  
crave—all natural, chemical-free  
and with a low risk of plant burn**

# Numbers that add up to plant health



Nutrients	FMHB3
Nitrogen	27.17
Phosphorus	15.00
Potassium	16.23
Ammonium	0.09
Calcium	59.97
Magnesium	19.80
C:N ratio	38

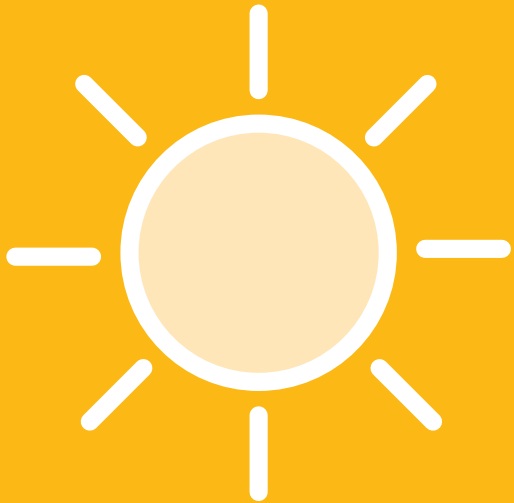
Nutrient composition as of May 2026

**Alpaca manure** is packed with nitrogen, phosphorus, and potassium — the primary macronutrients that plants crave. It also contains a wealth of micronutrients to support overall plant health.

**Alpaca waste fiber** helps to improve soil structure, increase water retention, and promote beneficial microbial activity. This creates the ideal environment for your plants to flourish.

**Biochar** is a nature-based product and natural carbon solution with a highly stable carbon content and consistency of 85-90%, and a scientifically proven superior moisture retention and porosity level. Our biochar is the only certified Canada Brand (Ontario-made), premium quality, certified organic biochar.

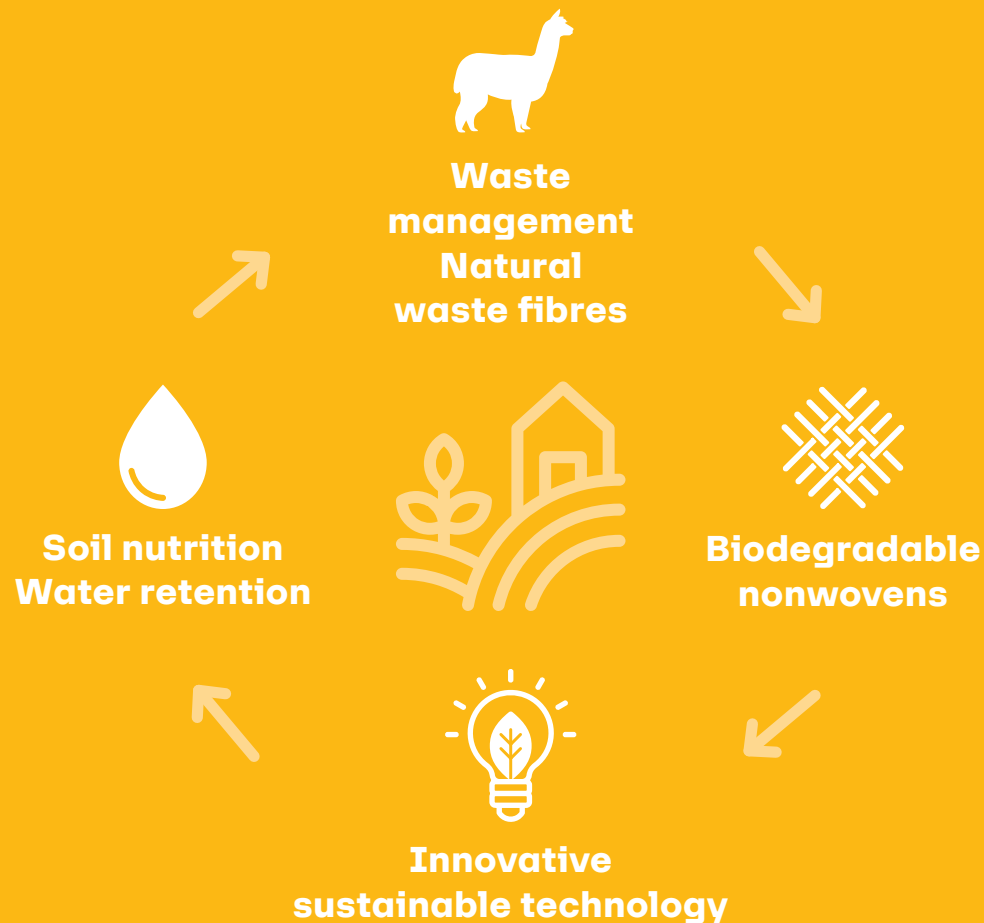
**100%  
Natural**



**Farming isn't just about growing crops or raising livestock. It is also about taking care of the land and ensuring its health for future generations.**

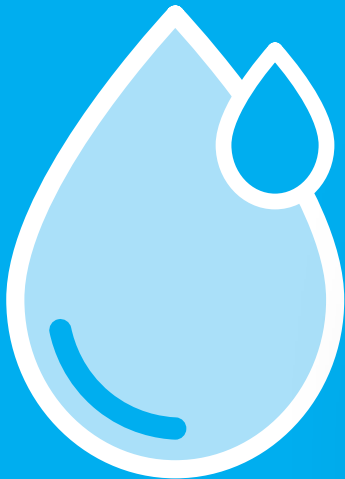


# Sustainable circular farming



**By upcycling** alpaca waste products — manure and waste fibre that cannot be processed into finished products — Alpaca Gold supports a sustainable, closed-loop farming system that minimizes waste and is gentle on the environment.

## Water Retention



**Alpaca Gold's biochar blend locks in nutrients, boosts soil biology, and transforms your soil into a healthy, resilient, high-performing garden medium.**



# The many benefits of our unique blend



1

## Nutrient Retention & Slow Release

Our biochar blend acts like a sponge for nutrients, holding nitrogen, phosphorus, and other nutrients in the soil longer, while also reducing nutrient leaching during heavy rains and snowmelt.

2

## Improved Soil Structure & Aeration

Alpaca Gold's mix of biochar lightens heavy clay soils and increases porosity. It adds organic matter, further improving water retention and root penetration.

3

## Enhanced Microbial Activity

Our blend provides tiny habitats for beneficial microbes. It supplies food for these microbes, boosting soil biology and nutrient cycling.

4

## pH Buffering & Long-Term Soil Health

Alpaca Gold can help stabilize soil pH, making nutrients more available. Over time, the blend improves soil fertility and resilience, year after year.

5

## Eco-Friendly and Sustainable

We use renewable resources (alpaca manure and biochar from plant material), which supports carbon sequestration, helping your garden and the planet.

# Maximizing plant growth year round

Alpaca Gold can be added as a Fall Application for overwintering or Spring Application in new or establish gardens.

Because winter is make-or-break for your soil—and Alpaca Gold does a lot of quiet heavy lifting while everything else sleeps. Prepping with Alpaca Gold in fall means less work, healthier soil, and stronger plants come spring—nature does the prep for you.

## **Protects & Feeds Soil All Winter**

- Forms a natural insulating layer that shields soil from freeze-thaw damage
- Prevents nutrient leaching during snowmelt and winter rains

## **Improves Moisture Retention**

- Holds moisture without compacting soil
- Helps prevent winter desiccation and spring runoff

## **Builds Better Soil Structure**

- High organic matter encourages microbial life to stay active longer
- Improves aggregation so soil is looser, richer, and easier to work in spring

## **Balanced, Slow-Release Nutrition**

- Naturally balanced nutrients release gradually
- High C:N ratio (~38) supports steady decomposition—no nutrient burn

## **Jump-Starts Spring Growth**

- Beds warm faster in spring
- Nutrients are already in place when roots wake up

## **Eco-Friendly & Sustainable**

- 100% natural, renewable, and odor-free
- Safe for vegetables, flowers, and perennials

# Designed for no-till gardening

Alpaca Gold is designed for no-till and is often spread in the alleys between plant rows. It is then incorporated into the topsoil, typically to a depth of around 30 centimeters, using equipment like a chisel plow tiller.

For the avid gardener, simply rake into the first 15 to 30 cm on the top of the soil.

## Low risk of burning plants

Unlike many manures, alpaca manure has a lower nitrogen level so it typically won't "burn" plants even if applied direct to soil.

## Natural & chemical-free

It's an organic amendment with no added synthetic chemicals when sourced from pasture-raised animals.

## Low odor and easy to handle

Many gardeners find it practical and pleasant to work with compared with some other manures

## Plants that thrive with Alpaca Gold

### Vegetables

- Leafy greens: lettuce, spinach, kale, Swiss chard
- Root crops: carrots, beets, radishes, potatoes
- Heavy feeders: tomatoes, peppers, cucumbers, squash, pumpkins
- Brassicas: broccoli, cabbage, cauliflower, Brussels sprouts

### Fruits & Berries

- Strawberries, raspberries, blackberries
- Blueberries (use lightly—acid lovers prefer lower pH)
- Fruit trees & shrubs (apple, pear, cherry, currant)

### Flowers & Ornamentals

- Roses
- Perennials (coneflower, peony, daylily, hosta)
- Annuals (petunias, marigolds, zinnias)
- Bulbs (tulips, daffodils, garlic)

### Herbs

- Basil, parsley, cilantro
- Chives, dill, fennel
- Rosemary, thyme, sage (use moderately)

### Trees, Shrubs & Landscape Plants

- Native plants & pollinator gardens
- Hedging and ornamental shrubs
- Newly planted trees (excellent for root establishment)



alpacagold.ca

**Regenerate the soil,  
rejuvenate the earth.**